

# Annual Report 2022

Norwegian Institute for Nature Research



# Norwegian Institute for Nature Research (NINA)

## Cooperation and expertise for a sustainable future

*NINA contributes to sustainable societal development by delivering research-based and relevant knowledge on biodiversity, climate and society. Our prioritized goals for the period 2020-2024 are:*

**NINA's work shall have high scientific quality and integrity.**

**NINA shall contribute to sustainable societal development.**

**NINA shall be visible and innovative in its knowledge dissemination.**

**NINA shall be an attractive and efficient knowledge enterprise.**

*NINA's slogan is:*

«Cooperation and expertise for a sustainable future»

**The Norwegian Institute for Nature Research, NINA**, is an independent foundation that conducts research on nature and the interaction between nature and society. NINA was established in 1988. The headquarters is in Trondheim, with branch offices in Tromsø, Lillehammer, Bergen, and Oslo. In addition, NINA operates the Sæterfjellet breeding station for Arctic foxes in Oppdal, and a gene bank and research station for wild salmonids in Ims, Rogaland.

NINA is recognized nationally and internationally for its socially relevant nature research. Our work has high scientific quality and integrity, and we provide knowledge for use in policy, management, and value creation. In this way, we contribute to sustainable decision-making in society.

Our work includes both research and assessment, environmental monitoring, advisory services, and evaluation. These are our research areas:

- Freshwater ecology
- Salmonids
- Coastal ecology and seabirds
- Renewable energy
- Terrestrial ecology
- Pollination and entomology
- Deer and reindeer

- Carnivores and society
- Nature restoration and nature-based solutions
- Urban ecology and natural capital
- Ecological condition and nature indexes
- Method development, mapping, and big data
- Social research

Active dialogue and communication are prerequisites for our work at NINA.

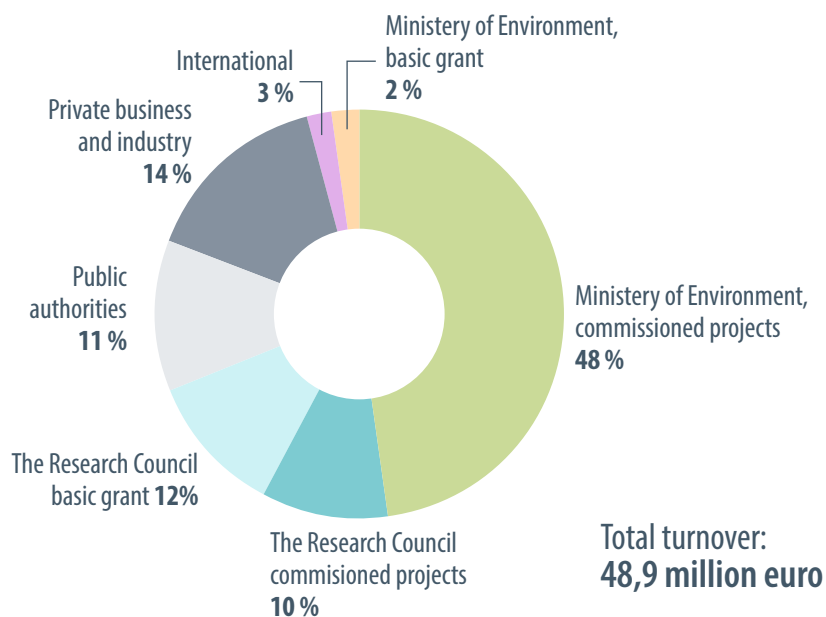
NINA participates in research collaborations such as CIENS (Centre for Interdisciplinary Environmental and Social Research), Fram Centre (Centre for Climate and Environmental Research in the Arctic), HydroCen (Norwegian Research Centre for Hydropower Technology), and NorthWind (Norwegian Research Centre on Wind Energy).

NINA is present in the largest university cities in Norway. This contributes to strong research collaborations with universities and strengthens the possibility of recruiting excellent researchers.

NINA has project collaborations with research institutions in more than 30 countries in Europe, Africa, Asia, and America.

NINA is also a member of ALTER-Net (A Long-Term Biodiversity, Ecosystem, and Awareness Research Network) and ILTER (International Long Term Ecological Research network).

## NINA's turnover 2022



## NINA's key statistics for 2022

Number of employees	2022	2021
Total	309	296
- scientific staff	203	198
- women	43 %	40,5 %
- women in scientific positions	40,1 %	37,9 %
- women on doctoral programs	50 %	53,8 %
<hr/>		
Number of employees (full-time equiv.)	2022	2021
Total	313	297

Number of publications	2022	2021
Scientific papers	307	346
NINA Reports	139	141
Media coverage	3208	3153
News stories published at nina.no	127	128
Unique visitors to nina.no website	328 000	362 620
Followers at Facebook	13 000	13 000

[www.nina.no](http://www.nina.no)

**NINA head office**

Postal address:  
P.O. Box 5685 Torgarden  
NO-7485 Trondheim, NORWAY  
Visiting address:  
Høgskoleringen 9, 7034 Trondheim  
Phone: +47 73 80 14 00  
E-mail: [firmapost@nina.no](mailto:firmapost@nina.no)

**NINA Oslo**

Sognsveien 68,  
NO-0855 Oslo, NORWAY  
Phone: +47 73 80 14 00

**NINA Tromsø**

Postal address:  
Framsenteret, P.O. Box 6606 Langnes  
NO-9296 Tromsø, NORWAY  
Visiting address:  
Hjalmar Johansens gate 14, 9007 Tromsø  
Phone: +47 77 75 04 00

**NINA Lillehammer**

Vormstuguvegen 40  
NO-2624 Lillehammer, NORWAY  
Phone: +47 73 80 14 00

**NINA Bergen**

Thormøhlens gate 55  
NO-5006 Bergen, NORWAY  
Phone: +47 73 80 14 00

**NINA Ims Research Station**

Ryfylkeveien 980  
NO-4308 Sandnes, NORWAY  
Phone: +47 73 80 14 00

ISSN 0809-8808

Coverphoto: Karl-Otto Jacobsen, NINA  
Editor: Norunn S. Myklebust and Bjørg Brusset, NINA  
Graphic design: Eva Setsaas, NINA



Norwegian Institute for Nature Research